

SURGTECH

M E D I C A L D E V I C E

PLIF

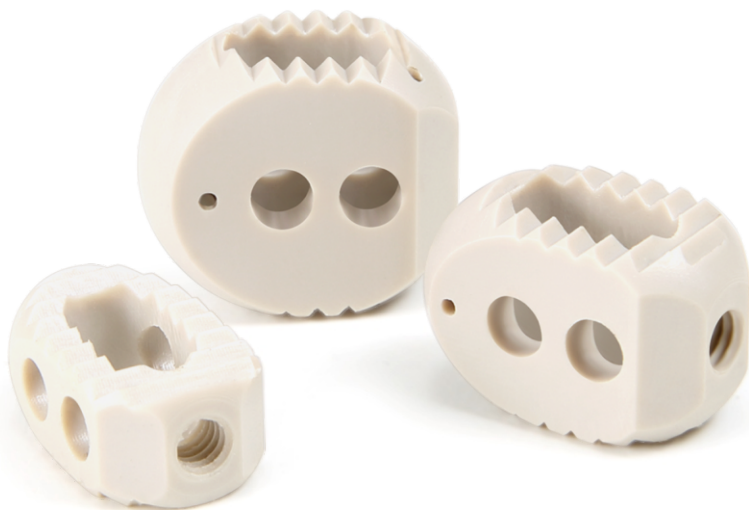
Interbody System

SurgTech

SurgTech Interbody System

Indications

"The SurgTech Interbody System is indicated for use with autogenous bone graft in skeletally mature patients with degenerative disc disease (DDD) at one or two contiguous levels from L2 to S1. DDD is defined as discogenic back pain with degeneration of the disc confirmed by history and radiographic studies. These patients should have had six months of non-operative treatment. These patients may have had a previous non-fusion spinal surgery and may also have up to Grade 1 spondylolisthesis or retrolisthesis at the involved spinal level(s). These devices are intended to be used with supplemental fixation which has been cleared for use in the lumbar spine(i.e. a posterior pedicle screw and rod system)."



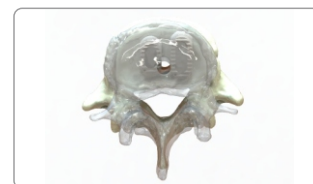
1. Bullet Nose Design

The bullet nose of the PLIF is ergonomically designed for the ease of insertion, which allows the implants to be inserted into disc with small clearances, while minimizing damage to endplate.



2. Axial Canal Design

The large axial open architecture is designed to accommodate autogenous bone graft to allow fusion to occur through the spacer.



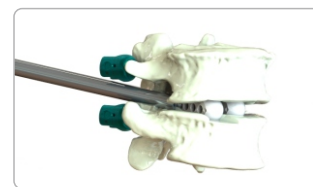
3. Optimal Positioning

"The implant has two radiographic marker pins at opposing corners of the implant, which provides an easy means of identifying implant position and orientation on radiographic images."



4. Polyetheretherketone(PEEK) Material

"The SurgTech Interbody System are manufactured from PEEK Optima® that has proven biocompatibility and strength. The material has the following characteristics: Radiolucent for easy monitoring of healing site with X-rays, CT or MRI Bone-like modulus helps minimize stress shielding and stimulate bone healing Extremely strong, durable and highly resistant to creep and fatigue"



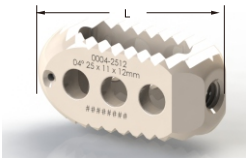
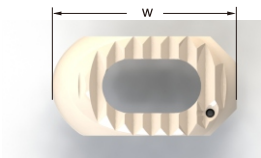
5. Ergonomically designed Instrumentations

"The instrumentation system offers a variety of options for sizing, decompression and maneuverability. The PLIF inserter was specifically designed with match the implant and has proven strength under impaction."



6. Adaptive Sizing

The SurgTech Interbody System offers 2 different footprints at 0 degree and 4 degree lordosis. The height of implant ranges from 9-18mm in 1mm increments. As a result the system comprised of 80 implants available in a single set, , enabling precise anatomic height and lordotic restoration in a variety of patient populations



Heights	4° /0° Lordotic 25mm*11mm	4°/0° Lordotic 20mm*11mm
9 mm	•	•
10mm	•	•
11mm	•	•
12mm	•	•
13mm	•	•
14mm	•	•
15mm	•	•
16mm	•	•
17mm	•	•
18mm	•	•



(440) 899 2922



24600 Center Ridge Rd, Westlake OH